

*Presentation for the Legislative Education Study Committee*

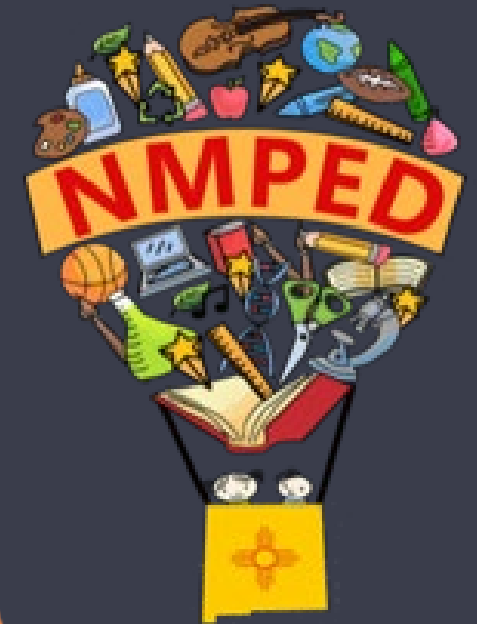
# State Charter Authorizer Funding

Amanda DeBell, Deputy Secretary for Teaching, Learning and  
Innovation

Dr. Brigitte Russell, Interim Director, Charter Schools Division

*July 25, 2025*

*Investing for tomorrow, delivering today.*



*A Presentation by the  
New Mexico Public  
Education Department*

# New Mexico Charter Schools and Authorizers

- State Charter Schools
  - Authorized by the Public Education Commission (PEC)
  - Independent Local Educational Agencies (LEAs)
  - 62 state-chartered schools in 2025-26
  - 89 districts + 62 state charters = 151 LEAs
- Local or District Charter Schools
  - Authorized by a local school district
  - Not an independent LEA; component unit of school district
  - 40 district-authorized schools in 2025-26
    - ✓ 30 authorized by Albuquerque Public Schools
    - ✓ 10 authorized by nine other districts

# Charter Authorizer Funding

- Authorizer oversight and support of charter schools funded by 2% of school-generated program cost (22-8B-13 NMSA 1978)
- State charter contribution appropriated to PED with a portion designated to support PEC and the Charter Schools Division (CSD)
  - Formula in Memorandum of Understanding (MOU)
  - Number of state charters divided by sum of all charter schools and districts

	FY24	FY25	FY26
PEC	68.95%	68.98%	67.58%
PED	31.05%	31.02%	32.42%

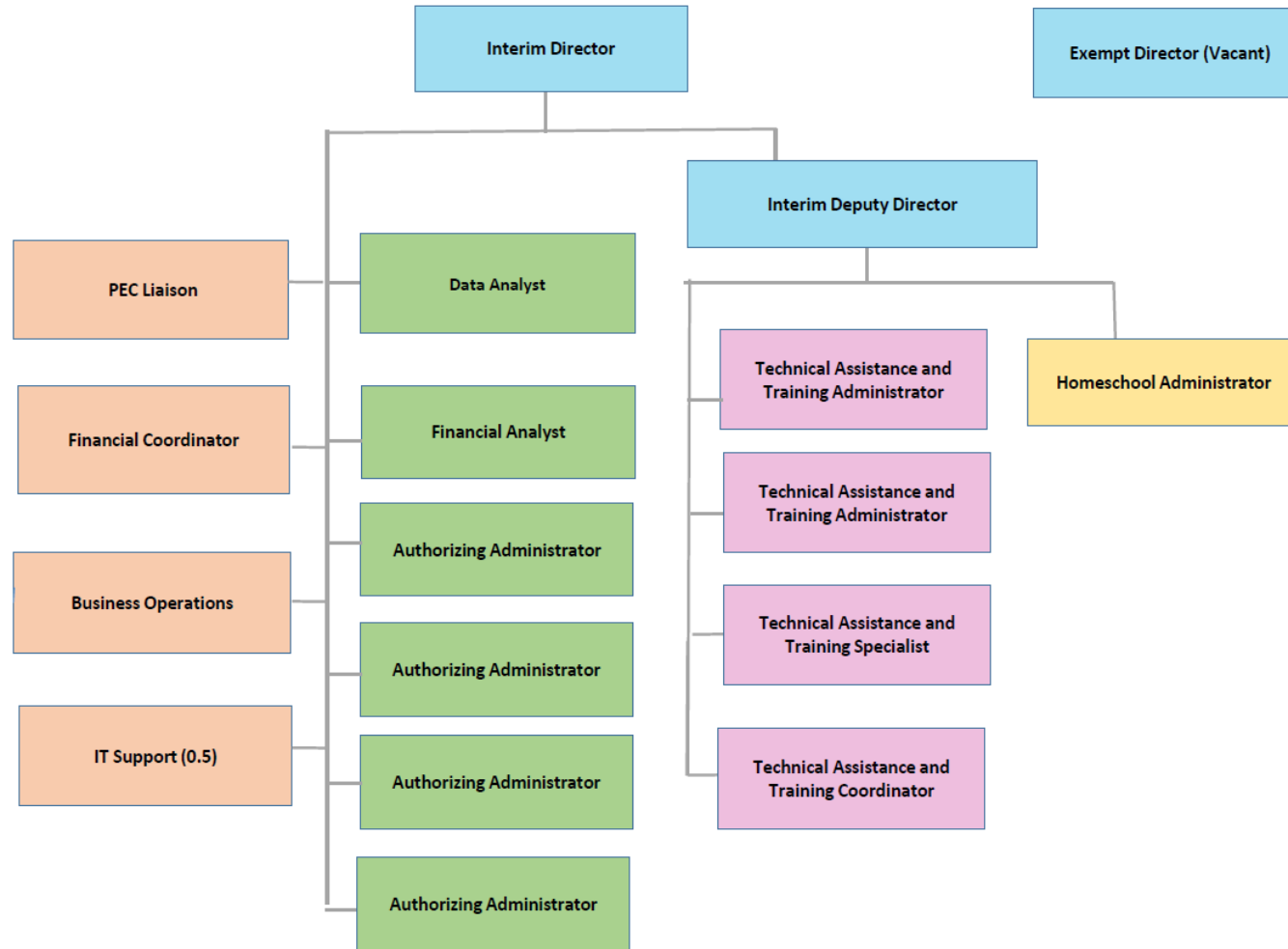
# Use of State Charter 2%

- Charter Schools Division (CSD) staff support for PEC meetings, work sessions, hearings
- CSD oversight and monitoring of state charter schools
  - Annual site visits, annual performance reports
  - Renewal applications
  - Applications to open new charter schools
  - Requests to amend charter contract
- CSD technical assistance and support
  - Training for governing board members (all charter schools)
  - Training for new applicants, newly approved schools, renewal applicants
  - Technical assistance as needed and upon request

# Use of State Charter 2% (continued)

- Data system for oversight of state charter schools (beginning FY24)
  - Manage submissions required for compliance
  - Reporting on performance framework indicators
- School improvement grants to state charter schools (beginning FY25)
  - Support in areas of the performance indicators rated below meets standard
  - \$399,000 awarded to support 41 state charter schools
- Annual charter schools conference
- Support to charter schools from other PED bureaus
- PEC and CSD professional development

# Charter Schools Division (17.5 FTE)



# State Charter 2% Funds Expended

Funds not expended at the end of the fiscal year revert to the State General Fund.

Because FY25 expenditures are still being processed, expenditure and reversion amounts are unavailable at this time, but the reversion percentage will be lower than in FY24.

	FY23		FY24	
	Amount	Percentage	Amount	Percentage
Expended	\$3,732,498.63	86.30%	\$4,513,347.76	86.23%
Reverted to General Fund	\$592,400.97	13.70%	\$720,600.02	13.77%
<b>Total</b>	<b>\$4,324,899.60</b>		<b>\$5,233,947.78</b>	

# Future Initiatives

- Zero reversions
  - Enhancements to charter school programming
  - Expand grants in support of schools
  - If the 2% were non-reverting, it would go into the charter school stimulus fund 22-8B-14 NMSA 1978 as the fund exists with money now and would require legislation
- Charter school performance framework
  - Tool for PEC to assess how schools they authorize are performing
  - Allows schools that serve alternative populations to demonstrate improvement
    - ✓ Dropout recovery high schools
    - ✓ Students with special needs
- More options for students and families
  - Expand existing high-quality charters
  - Support new charters in communities without school choice



# Thank you!

## For Questions

Amanda De Bell, Deputy Secretary,  
Public Education Department  
Amanda.DeBell@ped.nm.gov  
(505) 000 - 000

Dr. Brigette Russell, Interim Director,  
Charter Schools Division  
Brigette.Russell2@ped.nm.gov  
(505) 470 - 1574

